

A photograph of a green boat on a river in a tropical forest. The boat is in the foreground, and the river flows towards a dense forest in the background. The sky is blue, and there are some palm trees visible. A date box is in the top right corner.

April 19, 2012

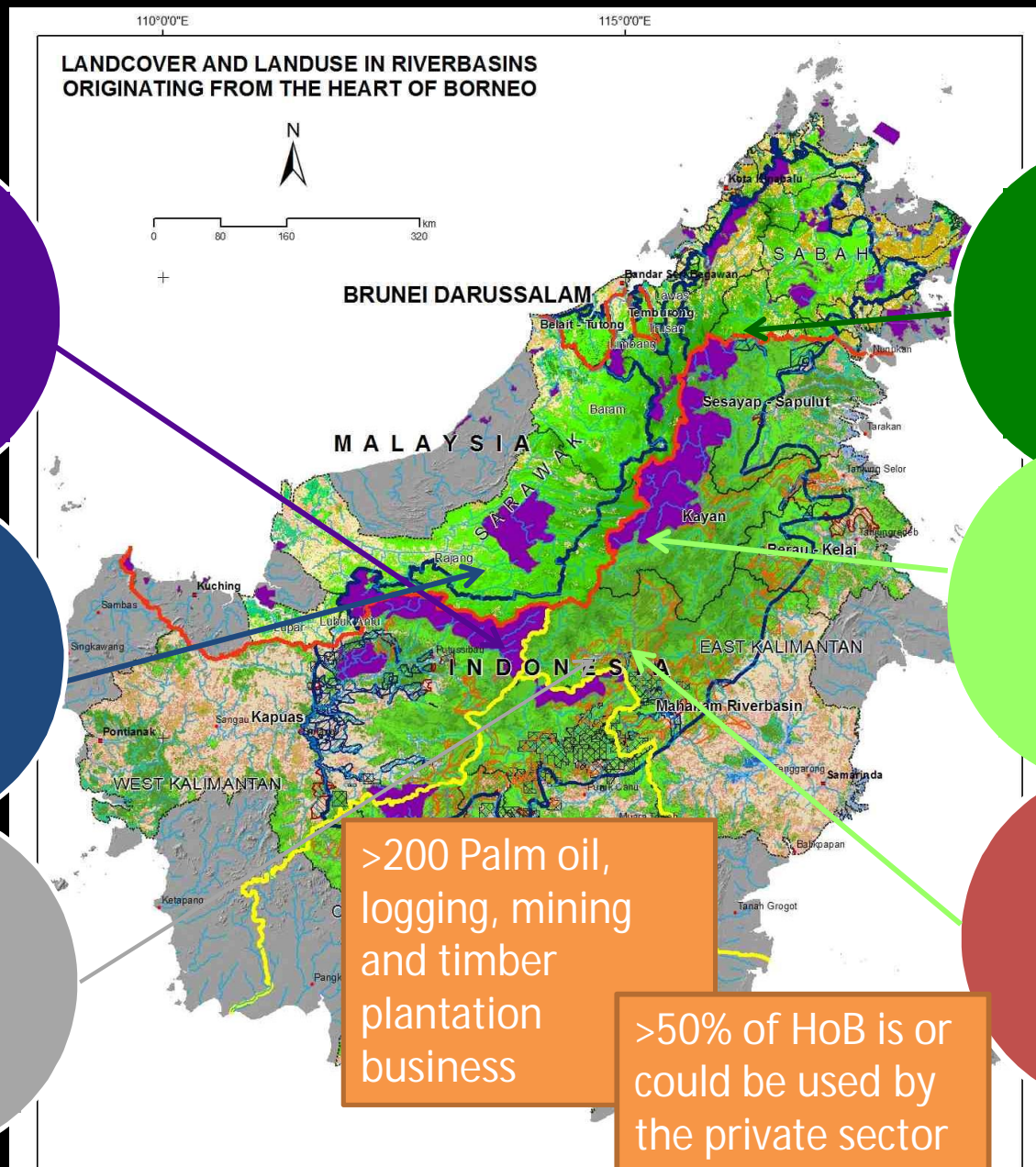
HEART OF BORNEO INVESTING IN NATURE FOR A GREEN ECONOMY

An Overview

Anna van Paddenburg
apaddenburg@wwf.or.id

Sustainable Finance and Policy Strategy Leader
WWF Heart of Borneo Network Initiative

HoB landscape: A mosaic of different land-uses and Part of 29 River Basins



Official PAs

Large scale HEP

Mining

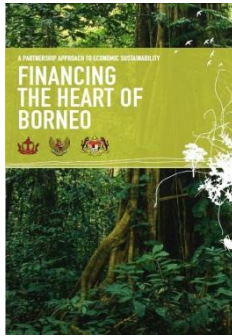
Logging

Palm Oil

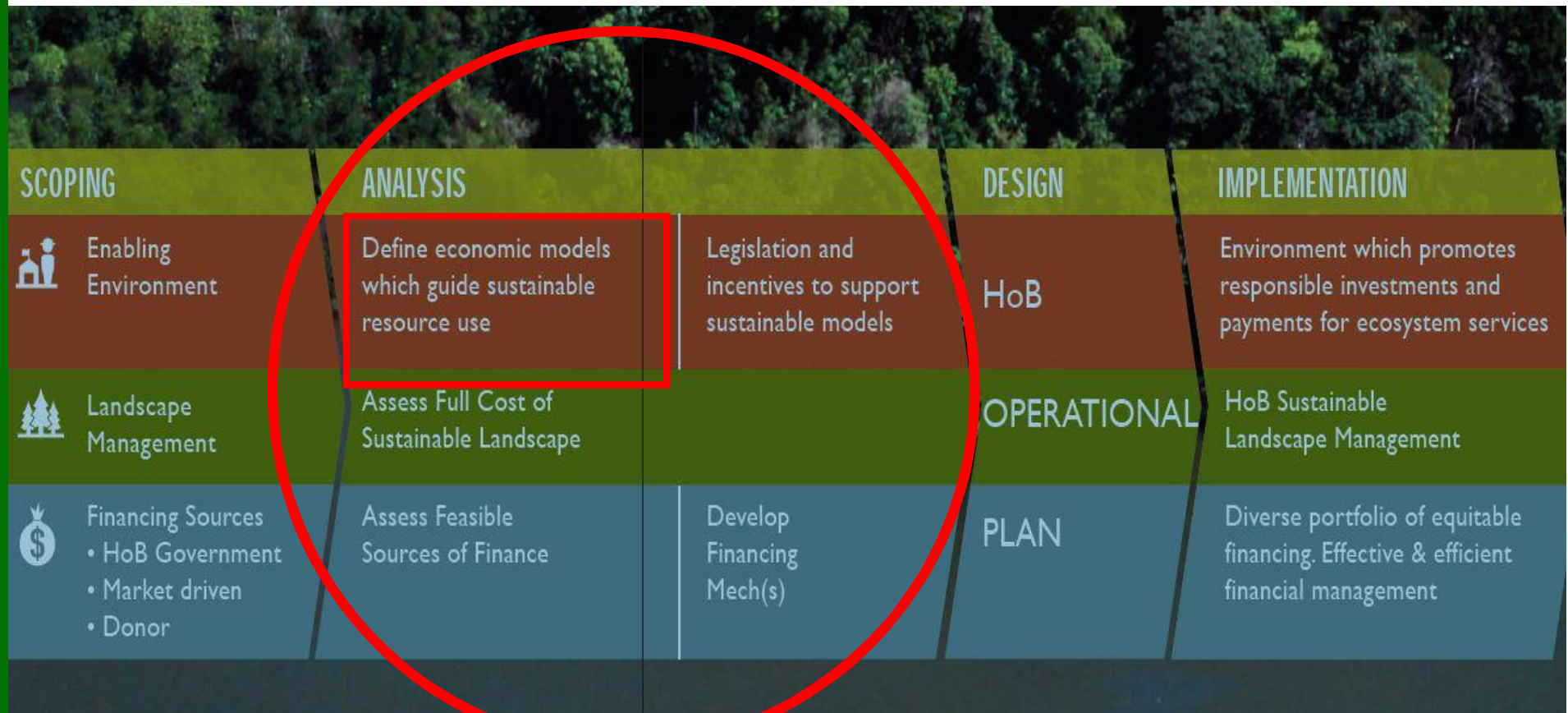
Local livelihoods

>200 Palm oil, logging, mining and timber plantation business

>50% of HoB is or could be used by the private sector



HoB Governments are committed to Heart of Borneo, but how can investments be sustainable?



The challenge: HoB's biodiversity and ecosystems are not recognized as important to the economy so the HoB Initiative is not fully integrated within economic development plans.

Is the answer 'A GREEN ECONOMY'?

- WWF and a few partners initiated the process of better understanding the value of natural capital into economic and development plans
- Stakeholder engagements and several workshops have been held to explore the potential for, and local views on, a Green Economy in Borneo and HoB's role in the Economy (more than 600 people have taken active part in the dialogues so far)
- Green Business Network Dialogues – e.g. HoB session at B4E
- Workshops on development of scenarios, defined drivers and cause and effect relations, collated data input into models and explored the prospects of future development (LCM, InVEST, Systems Dynamics)
- Report and Website currently in development to present findings based on workshops and consultations at national and local levels as well as on models



A possible 'GREEN ECONOMY'... is one that recognizes the value of HoB's biodiversity and ecosystems in the Economy

- An economy at the service of people
- An economy ready for climate change

Green Economy
Coherent ecosystem based spatial planning, Category Degraded Land, PAs, Community Forests
Integrated Watershed Management
Certified logging, reforestation
Certified palm oil, permits only allocated for cultivation on degraded land, reduced fertilizer and pesticide application.
International standard of practice, Improved waste management treatment
Improved ecological practices
Energy efficiency prioritized, Investments in renewable energy power plants
Sustainable biodiversity products from legal community forests (NTFP and agro-forestry) Added value generated in region and markets accessible.
New business models build local economies from effectively utilizing "waste products" of current industries in the Heart of Borneo.

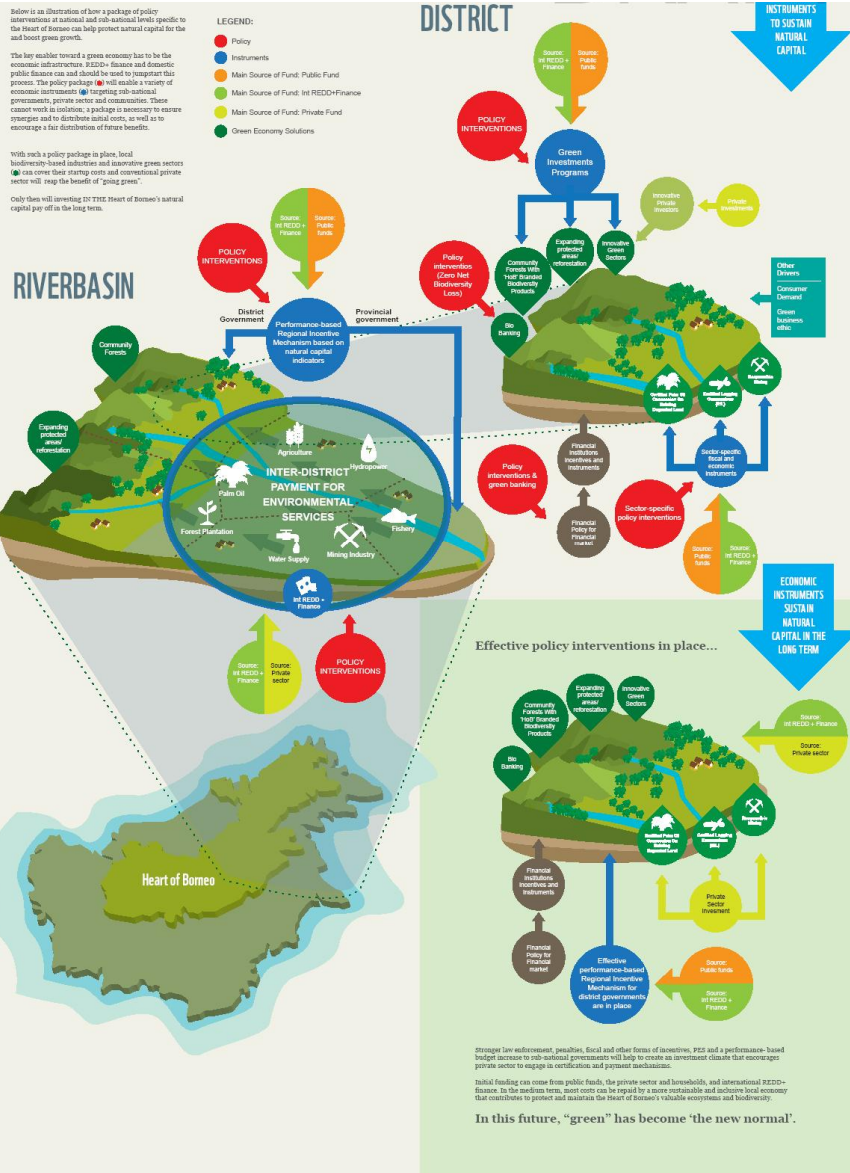
A possible 'GREEN ECONOMY'... is one that recognizes the value of HoB's biodiversity and ecosystems in the Economy

- The biggest obstacle to mobilizing green economy solutions is the need to overhaul the current economic infrastructure
- Rewarding good behaviour and penalizing bad behaviour
- Policy Intervention → Economic Instruments → Change of Behaviour

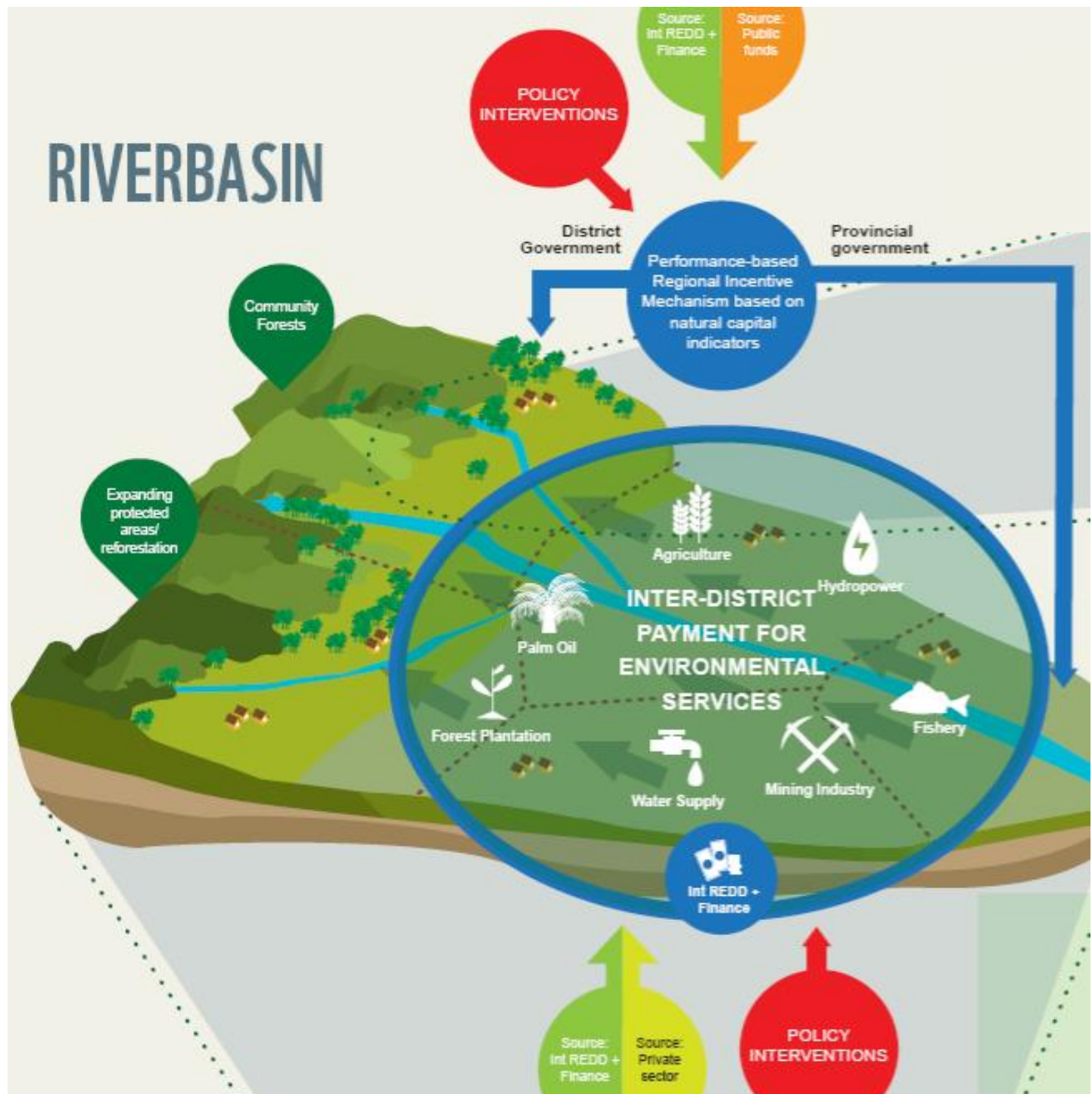
KEY POLICY INTERVENTIONS:

- Regional Incentive Mechanisms to reward/penalize good governance on natural capital
- PES at scale
- Sector-specific incentives and disincentives to reward/penalize business on sustainability
- 'Green' Government Investment Programs
- Policies to encourage 'Green' Banking

An economic policy package for Green Growth and sustaining Natural Capital linked to KSN HoB



RIVERBASIN



LEGEND:

- Policy
- Instruments
- Main Source of Fund: Public Fund
- Main Source of Fund: Int REDD+Finance
- Main Source of Fund: Private Fund
- Green Economy Solutions

DISTRICT



LEGEND:

- Policy
- Instruments
- Main Source of Fund: Public Fund
- Main Source of Fund: Int REDD+Finance
- Main Source of Fund: Private Fund
- Green Economy Solutions

A photograph of a boat on a river, viewed from the front of the boat. The water is brownish and the banks are covered in dense green trees. A large green rectangular overlay covers the middle portion of the image. In the top right corner of the image, there is a white-bordered box containing the date "April 19, 2012".

April 19, 2012

Thank you

Anna van Paddenburg

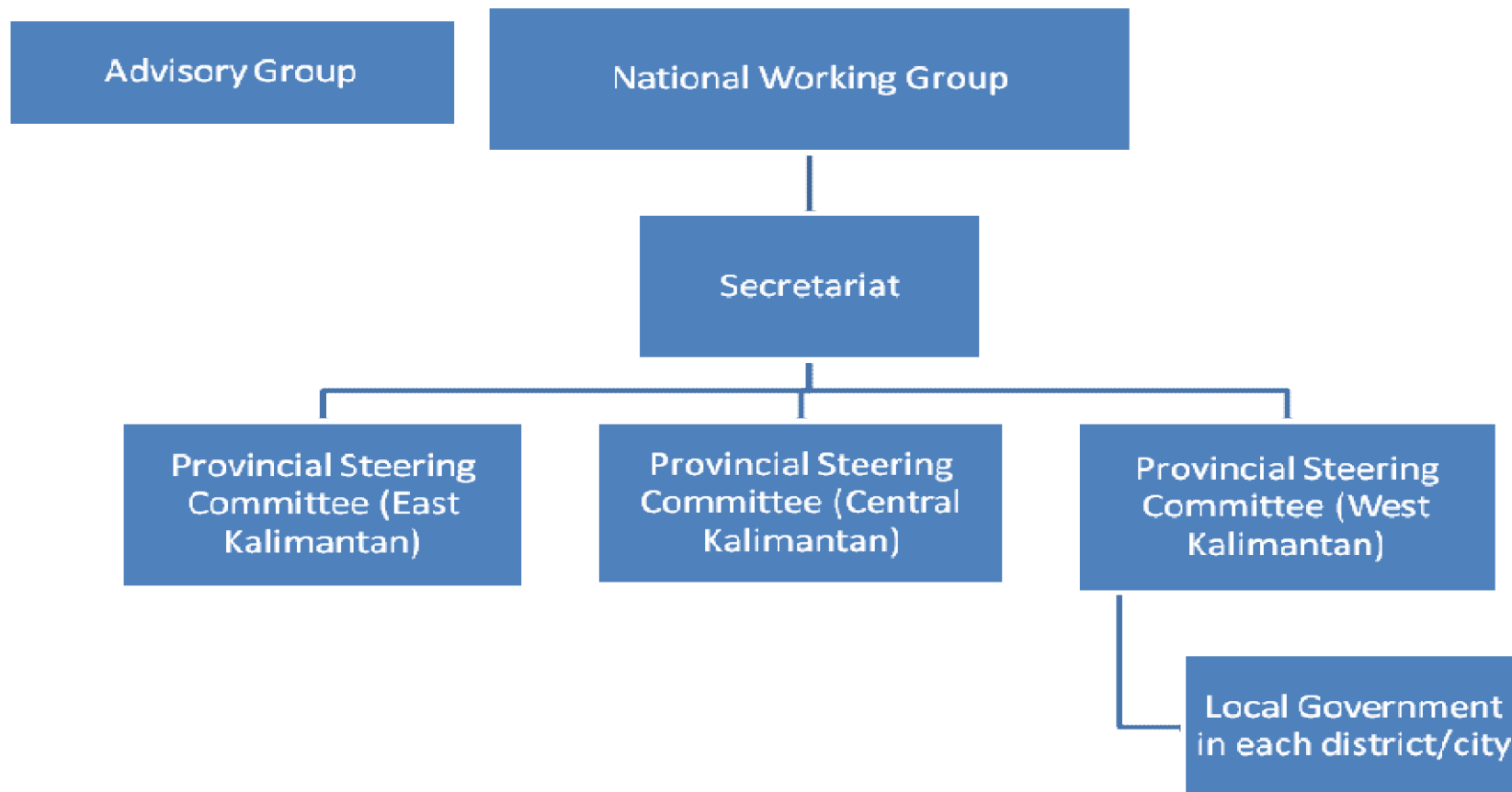
apaddenburg@wwf.or.id

Sustainable Finance and Policy Strategy Leader

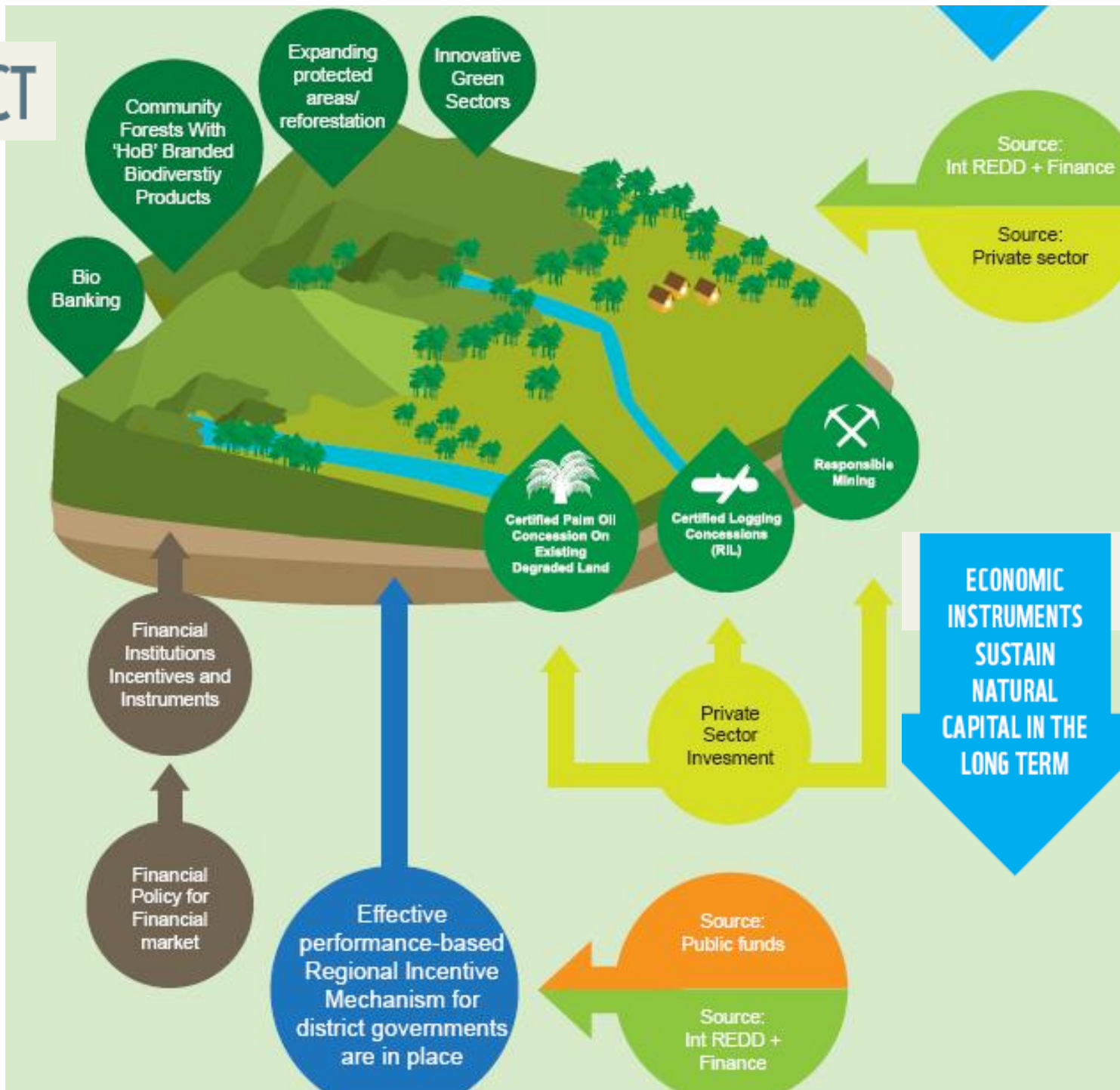
WWF Heart of Borneo Network Initiative

Government Ownership

- National Working Groups in Indonesia



DISTRICT



- LEGEND:**
- Policy
 - Instruments
 - Main Source of Fund: Public Fund
 - Main Source of Fund: Int REDD+Finance
 - Main Source of Fund: Private Fund
 - Green Economy Solutions