



Achievement of The Heart of Borneo: Indonesia

Presented at

Heart of Borneo Forum-Green Economy for People, Planet and
Prosperity

20 April 2012, Jakarta

Andi Novianto

Assistant to Deputy Minister for Forestry - Coordinating Ministry for Economic Affairs

CONCEPT AND IMPLEMENTATION

2

NATIONAL PRIORITY 2010-2014

11 National
Priority
(Mid Term Plan
2010-2014)

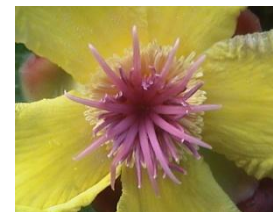
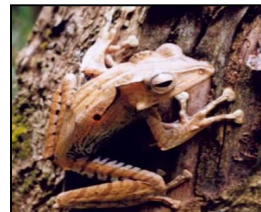
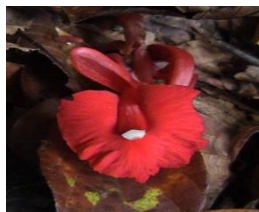
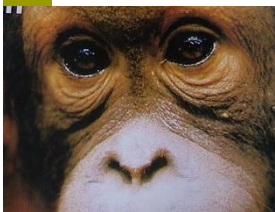
- 1 Governance and Reform
- 2 Education
- 3 Health
- 4 Poverty
- 5 Food Security
- 6 Infrastructure
- 7 Investment Climate
- 8 Energy
- 9 **Environment**
- 10 Regional Development
- 11 Culture and Innovation Technology

THE HEART OF BORNEO

Heart of Borneo (HOB) is a unique ecosystem predominated by highlands and mountainous regions, which has high biodiversity richness and functions as the source of the island's main watersheds. This ecosystem is currently threatened by fast and massive destruction, hence a joint effort is urgently needed to save and conserve the ecosystem for future livelihood.

HOB straddles along the three countries:
Indonesia – Malaysia and Brunei → regional transboundary cooperation

HOB area consists of :
Conservation Area → for biodiversity protection and preservation;
Utilization Area (Forest-Non Forest) and Mining → sustainable development principles → people's welfare (local-customary/indigenous)



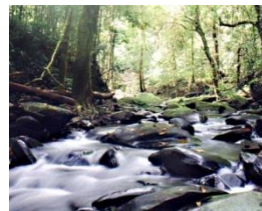
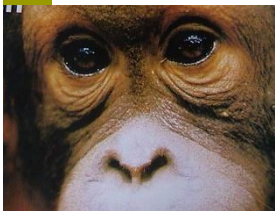
BASIC CONSIDERATIONS FOR HOB AREA DESIGNATION

Purpose of the designation → to protect the Heart of Borneo area

Management – utilization of natural resources at the border area → problems and programs of border development

BASIS FOR AGREEMENT

PRINCIPLES AND CRITERIA FOR HOB AREA DESIGNATION



PRINCIPLES AND CRITERIA FOR HOB AREA

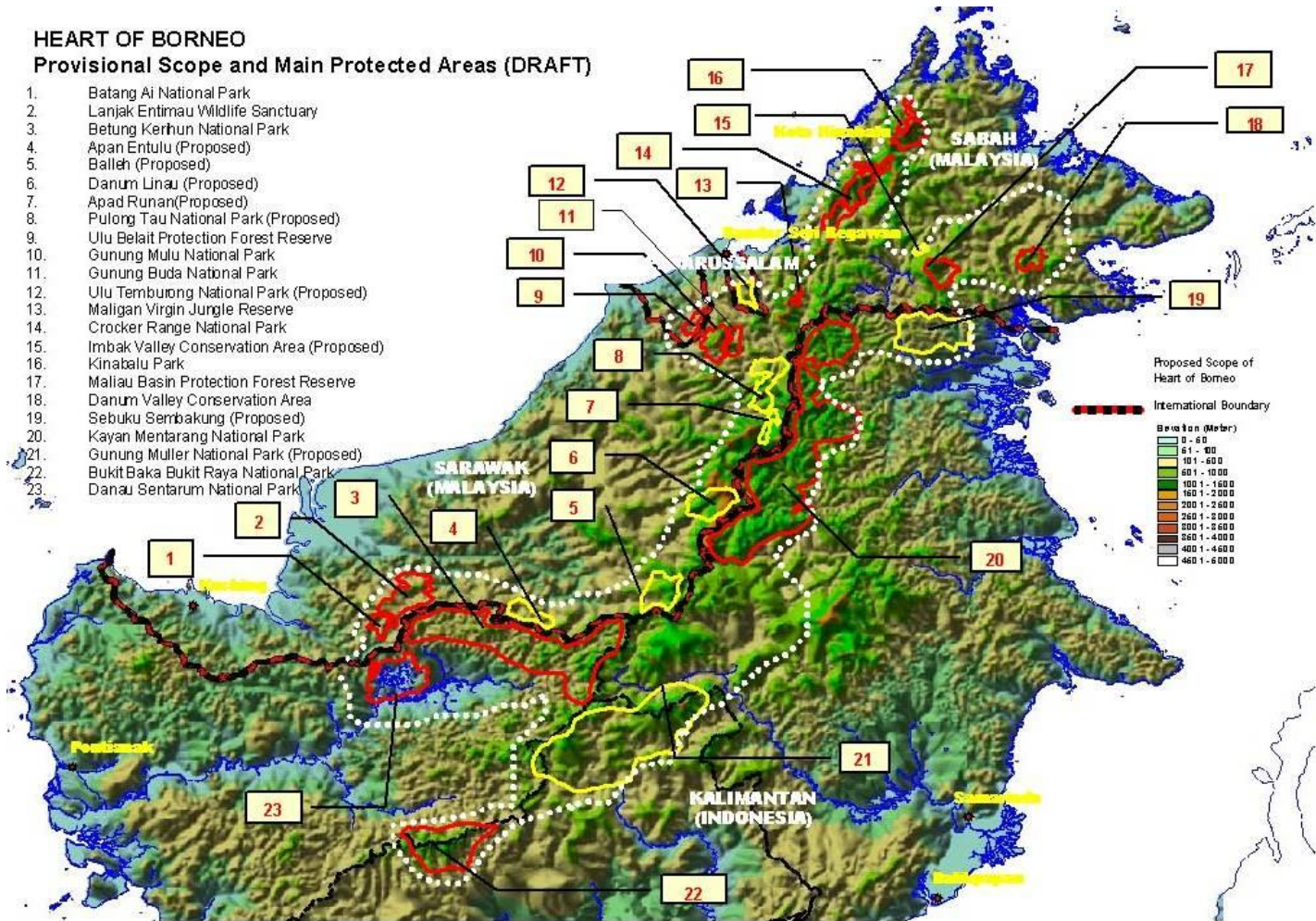
Principles	Criteria
<ol style="list-style-type: none">1. Sustainability of life-supporting system (socio-culture, economy, and ecology)2. Regional and local co-operation3. Operational	<ul style="list-style-type: none">• Ecoregional-based highlands and mountainous regions• Border area;• Inter-countries cooperation;• Conservation which is based on sustainable development's three pillars (socioecocultural, local and customary)• Synergy of the present initiatives• Socioculture and integrity of the customary communities• Upstream and downstream protected areas• High Conservation Value Forest = HCVF)

DISTRIBUTION OF HOB AREA

Name	Country	Total HOB Area (ha)	% of HOB
Central Kalimantan	Indonesia	2,466,000	11,2
West Kalimantan	Indonesia	4,010,000	18,2
East Kalimantan	Indonesia	6,137,000	27,8
	Total Indonesia		57,2
Brunei Darussalam	Brunei	131,570	0,6
Sarawak	Malaysia	5,373,000	24,3
Sabah	Malaysia	3,968,000	17,9
	Total Malaysia		42,2
		22,085,570	100

57,2 % of HoB area in Indonesia

HOB MAP



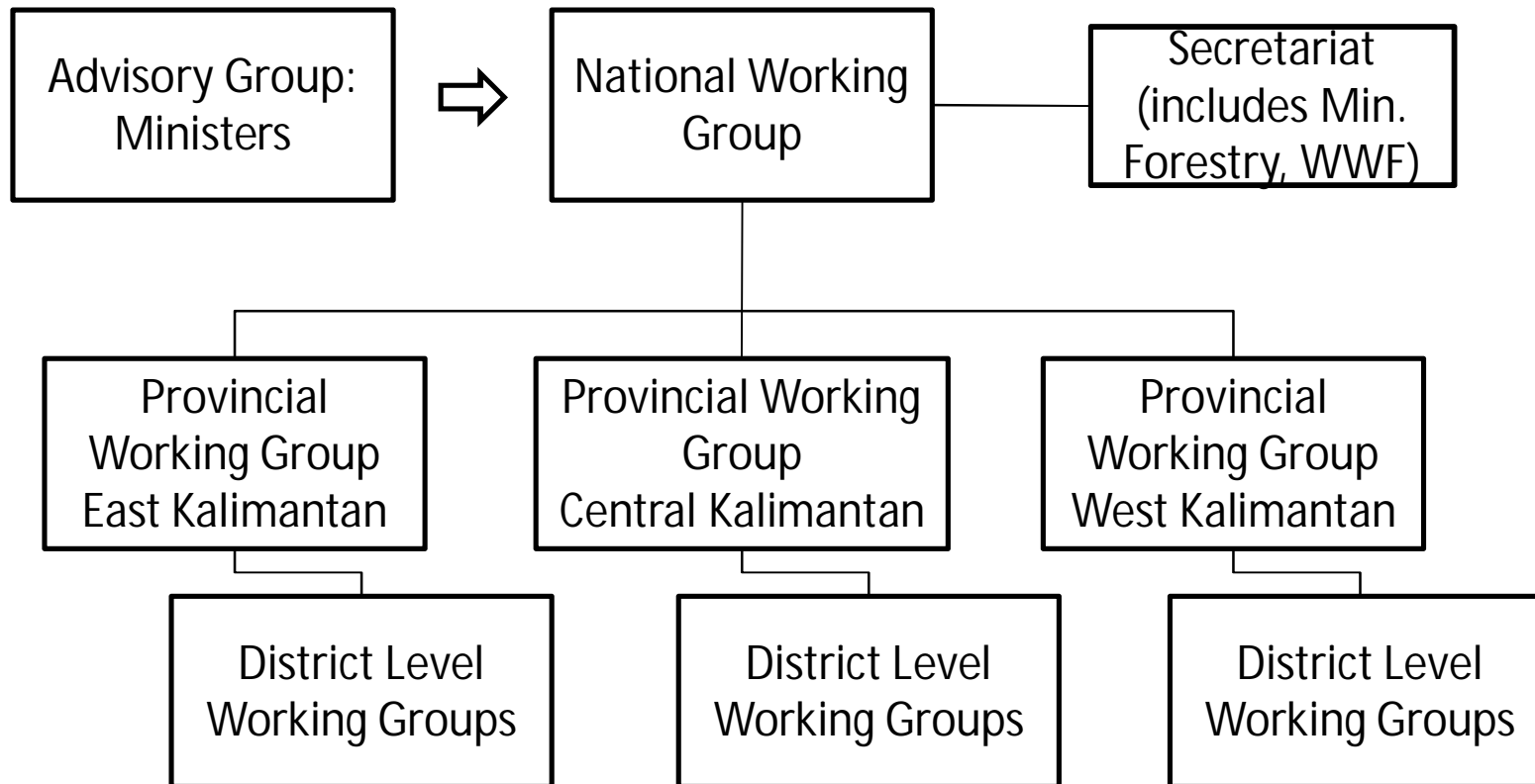
HOB AREA IN INDONESIA

PROVINCES	DISTRICTS
1. East Kalimantan	a. Nunukan b. Malinau c. Kutai Barat
2. Central Kalimantan	a. Katingan b. Gunung Mas c. Murung Raya d. Barito Utara
3. West Kalimantan	a. Kapuas Hulu b. Melawi c. Sintang

PROGRESS OF HOB (among others)

- HoB governance structures (National, Provincial, District) in place
- National HoB Strategic Plan of Action
 - Inter Province/District Cooperation
 - Protected Areas Management
 - Natural Resource Management Outside Protect Areas
 - Institutional Strengthening and Sustainable Financing
- HoB designated as Strategic National Area in Kalimantan Master Landuse Plan developed (PP No 26/2008)
- Various on going and upcoming programs (e.g. ForCLIME, ADB/GEF, TFCA2)
- Indonesia hosts Trilateral Meeting (Trilateral 5), September 2011 in Balikpapan
- Established Sustainable Finance Program and Sustainable Finance Small Team

GOVERNANCE STRUCTURE



Members of National Working Group:

Coordinating Ministry for the Economy	Ministry of Forestry	Ministry of Home Affairs
Ministry of Environment	Ministry of Agriculture	Ministry of Public Works
Ministry of Energy and Mineral Resources	Ministry of National Planning	Ministry of Defence
Ministry of Foreign Affairs	Heads of Provincial level working groups Kalimantan	

STRATEGIC PLAN AREA

12

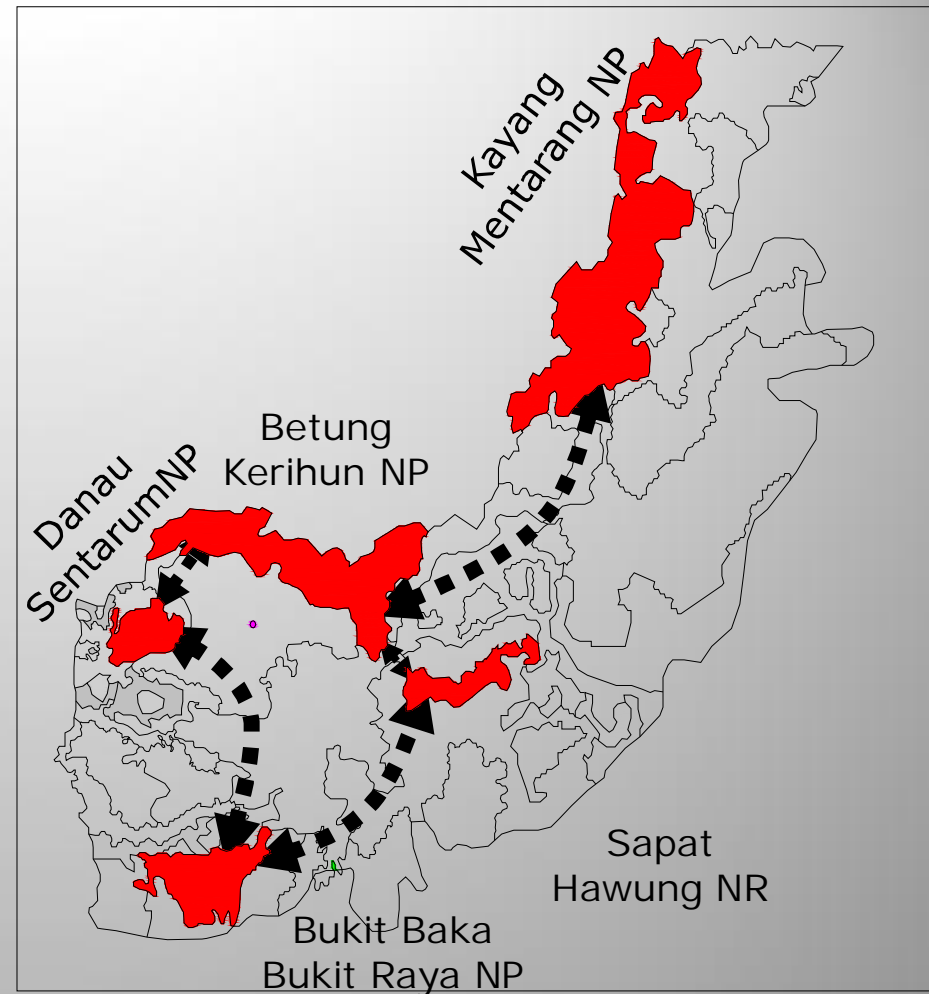
REASONS FOR A HEART OF BORNEO STRATEGIC NATIONAL AREA

- ❑ It is the upstream area of 14 main and big rivers in Kalimantan (Katingan, Sesayap, Sembakung, Seruyan, Kayan, Berau, Kedang Kepala, Belayan, Melawi, Ketungau, Kapuas, Kahayan, Barito, Mahakam River)
- ❑ It is an area with global biodiversity value (Flora: 82 % medicinal species (from the 2,039 sp. present in Indonesia), Fauna : 381 mamalia sp. (173 endemic), 771 bird sp.(146 endemik), 449 reptile and amphibian sp (249 endemic),and 430 fish sp. (164 endemic)
- ❑ It is one of the most intact global tropical rain forest in a compact and large area as a micro climate regulator, however, the rate of annually deforestation was close to 1,2 million ha (until 2005).
- ❑ Natural resources (forestry, mining, plantation) economies has degraded the environment with thousands of permits in the conservation and protective forest areas. Environmental capacity of the area has been challenged to be deficit.
- ❑ The need to strengthen village communities with limited access
- ❑ The fact that there are two inter-state rivers: Sembakung and Sesayap River

THE GOALS

- ❑ HoB is selected as SNA for its environmental functions and carrying capacity for national benefit
- ❑ Presenting a model of SNA for sustainable development
- ❑ The goals of the establishing the SNA are to:
 - To maintain the area for its high biodiversity value
 - To maintain the area as a “water tower” providing Kalimantan’s watershed services
 - To maintain the area as an area to support controlling global carbon emission reduction
 - To ensure economic development follow a sustainable development pathway based on environmentally-friendly and sustainable principles
 - To support green infrastructure and eco construction, including facilities and utilities which serve the basic needs of society
 - To strengthen the role of traditional communities
 - To strengthen inter-state collaboration on environmental management

Connectivity corridor
between Betung Kerihun
NP-Kayan Mentarang NP



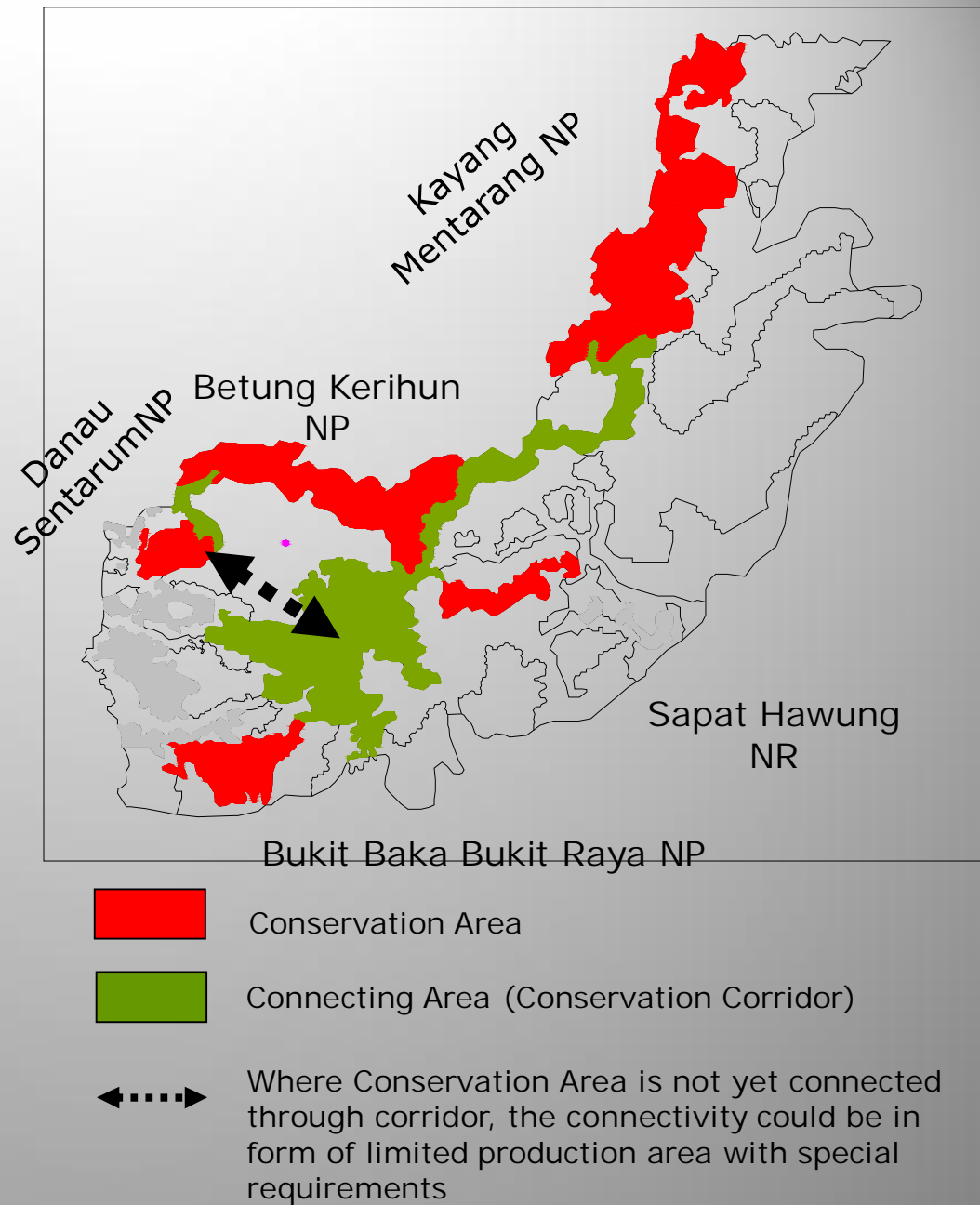
Conservation Area



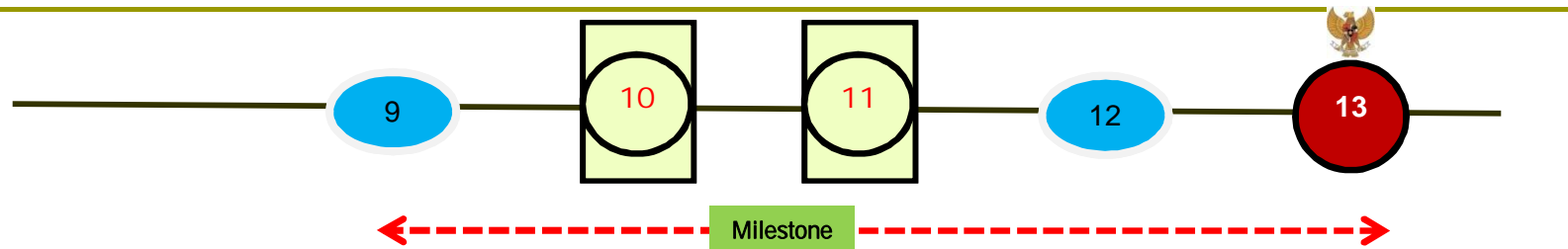
Conservation Area Corridor

The ecosystem integration is conducted by determining connecting area built to connect conservation areas

Understanding that connectivity between conservation areas is very important for sustainability of HoB area function



PLAN IN 2012



NO	WAKTU	KEGIATAN
9	Maret – April 2012	Governor Approval
10	April 2012	Eselon 2 BKPRN
	April-Agustus 2012	Bilateral Process, Ministrial and Regional Insitution
11	September 2012	Eselon 1 BKPRN
12	Oktober 2012	Submit to President
13	November - Desember 2012	Fasilitation Process at Cabinet Secretary Office and Ministry of Law and Human Rights

