



Workshop on Developing Recommendations for Climate Change Adaptation
in Priority Biodiversity Conservation Areas in the Greater Mekong Region
by WWF-GMP, Raks Thai, and SEA START RC

Climate Change and Adaptation Initiative Local Demonstration Site Activity

**Bangkok, THAILAND
17-18 June 2010**

**Chanon Thaicharoen
CCAI Technical Officer, MRCS**

Outline of Presentation

- CCAI Goal, Objective, and Outcomes
- Key targets of CCAI in 2010

- CCAI local demonstration site activity
- Components needed for demonstration activity

- Key criteria for site selection
- Current status of local demonstration in each country

- Problems and Challenges
- Move forwards

Goal and Objective of CCAI

The GOAL

“An economically prosperous, socially just, environmentally sound Mekong River Basin responsive and adapting to the challenges induced by climate change”

The OBJECTIVE

“Climate change adaptation planning and implementation is guided by improved strategy and plans at various levels and in priority locations throughout the Lower Mekong Basin”

CCAI Outcomes

- Climate Change Adaptation Planning and Implementation
- Improved Capacity to Manage and Adapt to Climate Change
- Strategies and Plans for Climate Change Adaptation
- Regional Exchange, Collaboration and Learning

Key Targets for CCAI in 2010

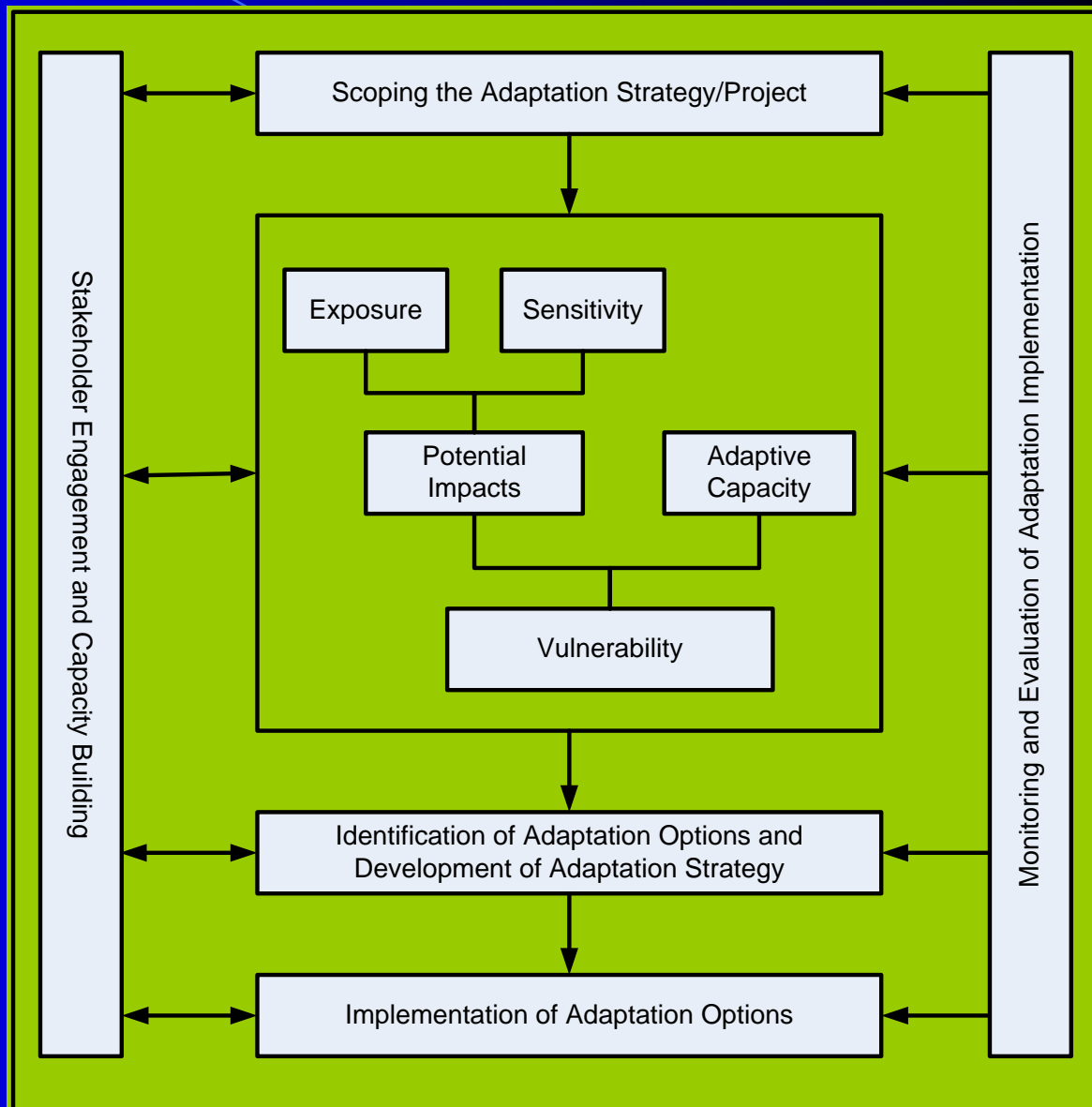
- CC modeling, scenario development and database
- Impact and VA and adaptation planning tools
- Demonstration sites scoping and implementation
- Capacity-building for demonstration sites
- Collaboration with core implementing partners
- CCAI Steering Committee
- Communication and awareness, including website;
- Harmonize reporting and monitoring system
- Mekong Panel on Climate Change (MPCC), make it operational

Aims of CCAI Demo Site

- Raise awareness and build capacity of climate change issue in the local level through adaptation planning process
- Implement the possible adaptation options to strengthen communities' resilience
- Synthesize the adaptation strategy at the local level and integrate into national level
- Provide lesson learned on climate change adaptation that could be replicated or upscaled.

Adaptation Planning Process

- Scoping the adaptation project
- Vulnerability assessment
- Identification of adaptation options and strategy
- Implementation of adaptation options



Adaptation Planning Process

- Collection Information
 - Define problem (existing, likely expected)
 - Baseline Information
- Impact of Climate Change
 - Climate stress => Change and Variability
 - Non-climate stress
- Vulnerability Assessment
 - Exposure, Sensitivity => Potential impact
 - Coping and Adaptive Capacity
- Identify Adaptation Options and Strategy
- Implementation

**Stakeholders
Participation**

Capacity Building

Evaluation and Monitoring

Adaptation Options

To Increase resilience of communities, sectors and areas

- Engineering options (dykes and drainage systems);
- Traditional local strategies;
- Social responses (e.g. resettlement, gender responsiveness);
- Land use planning (e.g. zoning and development controls);
- Economic instruments (e.g. subsidies and tax incentives);
- Natural systems management (e.g. rehabilitation, ecosystem enhancement);
- Sector specific adaptation practices (e.g. agriculture – crop varieties, planting patterns and irrigation regimes);
- Institutional and administrative innovations.

Stakeholders Involvement

- List of stakeholders at national and local levels (government agencies, local authorities, NGOs, private sector, community-based organizations, researchers)
- Process to engage these stakeholders at different stages of adaptation planning starting from scoping, vulnerability assessment, and adaptation planning and implementation
- Capacity-building to improve knowledge in effective participation

Gender Mainstreaming

- Gender analysis to understand climate change impacts on women and men, their different roles in coping with climate risks;
- Involvement and empowerment of women at different steps and levels in adaptation planning and decision-making;
- Ensuring that the initiative benefits men and women equally, in accordance with their different needs, and with the input and equal participation of men and women at all levels



Site Selection Criteria

- within the scope of the CCAI (relevance criteria)
- representative in relation to ecosystem types, physical and ecological concerns
- Facing real challenges from climate change vulnerability
- ability to demonstrate potential impacts of climate change
- providing lessons learned for up-scaling or replicating the adaptation planning process

CCAI Demo Sites

- **Cambodia**

- Prey Veng (Peam Ro, Pream Chor, Preah Sdach and Me Sang Districts)

- **Lao PDR**

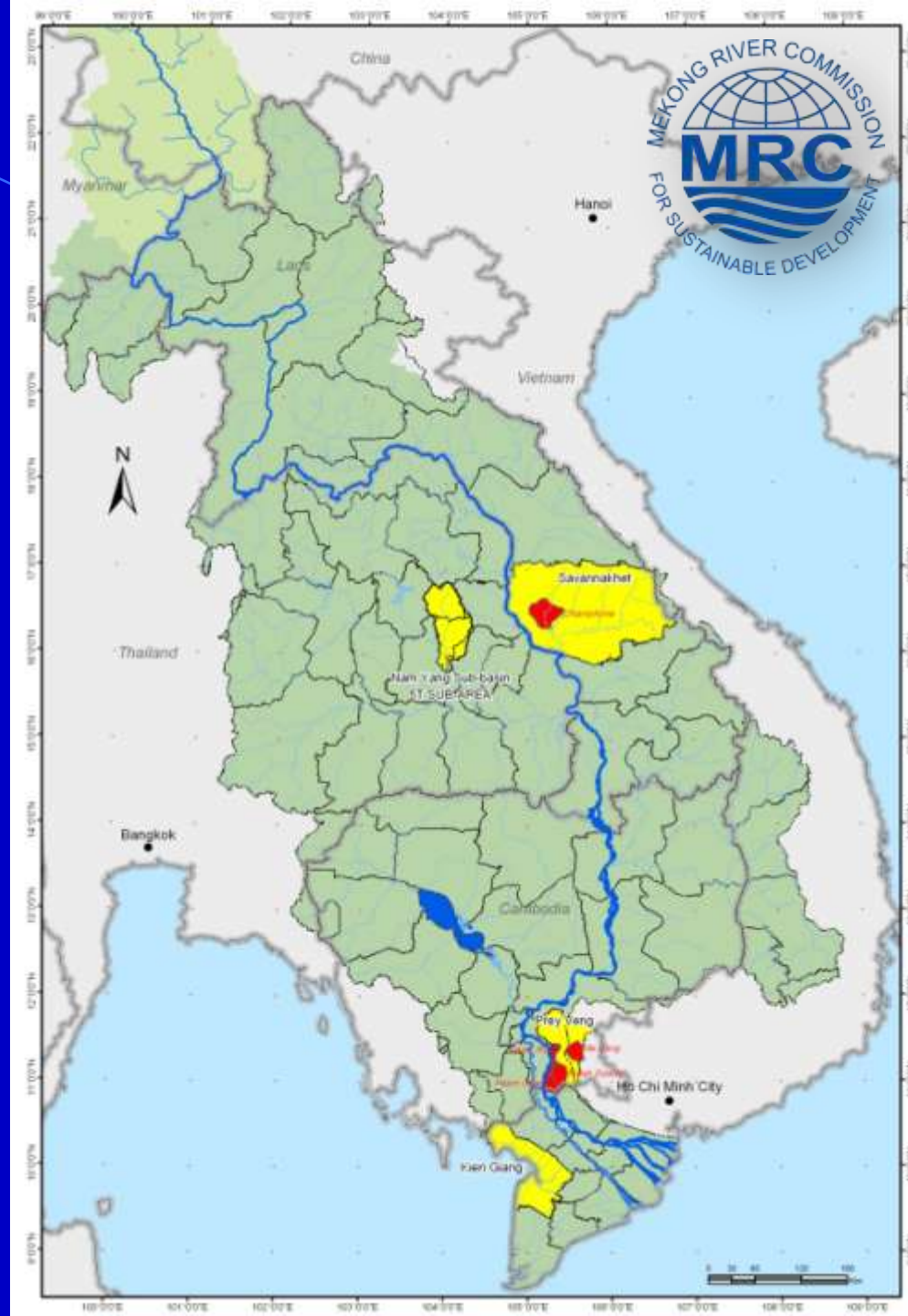
- Savannakhet (Champhone District)

- **Thailand**

- Nam Yang Basin (Tributary to Chi River)

- **Vietnam**

- Kien Giang



Cambodia Demonstration Site

- Increasing risk of flood/drought , extreme climate events and salinity intrusion
- Agricultural and Fisheries are the vulnerable sectors
- Increased vulnerability of children, elderly people, ethnic groups and women
- Villagers have noticed changes in the intensity and frequency of floods over the past years. Some adaptations have been individually practice
- Significant decline in water table. In some cases, wells cannot be used for more than a year.

The national project team is being considered by CNMC. The proposal for Prey Veng local demonstration site is now progressing and expected to be submitted to MRC CCAI in due course

Lao PDR Demonstration Site

- Highly vulnerable to both flood and drought
- Poor farmers are expected to be most vulnerable groups under the climate change and variability
- Some field surveys have been done to collect relevant information with preliminary risk assessment, community participations, and hazard mapping
- Preliminary response from the local
 - Extension of irrigation canal in Kangkok village to diversify agricultural option (for dry season rice cropping)
 - Analysis of soil textures and experiment of plants of various types in the silt-covered area at Nakatang village (defined as a long-term activities for climate change impact)
 - Introduction of flood resistance rice breeds and short season rice breeds in Ta Leow village.

Thailand Demonstration Site



- River Basin Organization has nominated Nam Chan, Nam Mong and Nan Yang for 2T, 3T and 5T sub-area, respectively.
- As result from national meeting (June 6, 2010), Nam Yang is finally selected for CCAI 2010
 - Potential climate change impact on agricultural sector.
 - Drought condition is more severe affecting large areas each year resulting in the poor socio-economic condition of local people.
 - Some adaptation in several ways, organic farming, soil fertility conservation, diversified cropping, and integrated farming practice. However, these adaptation options are not being supported at the regional level, in particular, in-depth researches on the potential of these adaptation options to the climate change and variability

Viet Nam Demonstration Site



- High biodiversity and ecosystems course economical diversity in agriculture, fisheries and tourism. The social distribution is high with many ethnic groups and significant poverty problems.
- One of the five biosphere reserve areas recognized by UNESCO in Vietnam is located in the province. Kien Giang biosphere reserve area covers 1.1 million has which is the biggest reserve area of Vietnam and Asean countries.
- It has already experienced climate change related impacts such as flooding which expects to increase in terms of intensity and severity .
- Some water quality problems have affected the aquaculture activity in the province. Besides, this province is highly exposed to sea level rise and saline intrusion.

Problems and Challenges

- Different geographical setting and scale, climate risk/vulnerability and corresponding climate adaptation options;
- Different capacity of national team and political system;
- Lack of common understanding on adaptation planning process and tools;
- Coordination and information sharing among national line agencies;
- Communication and information exchange among demo sites due to language barrier;

Moving Forward

- All local demonstration activities are expected to started by July 2010
- A regional training for adaptation planning process for all national teams, NMCs, line agencies, etc.

The experience gained in developing adaptation strategies will feed into and influence climate change adaptation policy development and refinement in the four LMB countries.

Global Phenomenon
Regional Collaboration
Local Action

Thank you



Mekong River Commission
Climate Change and Adaptation Initiative